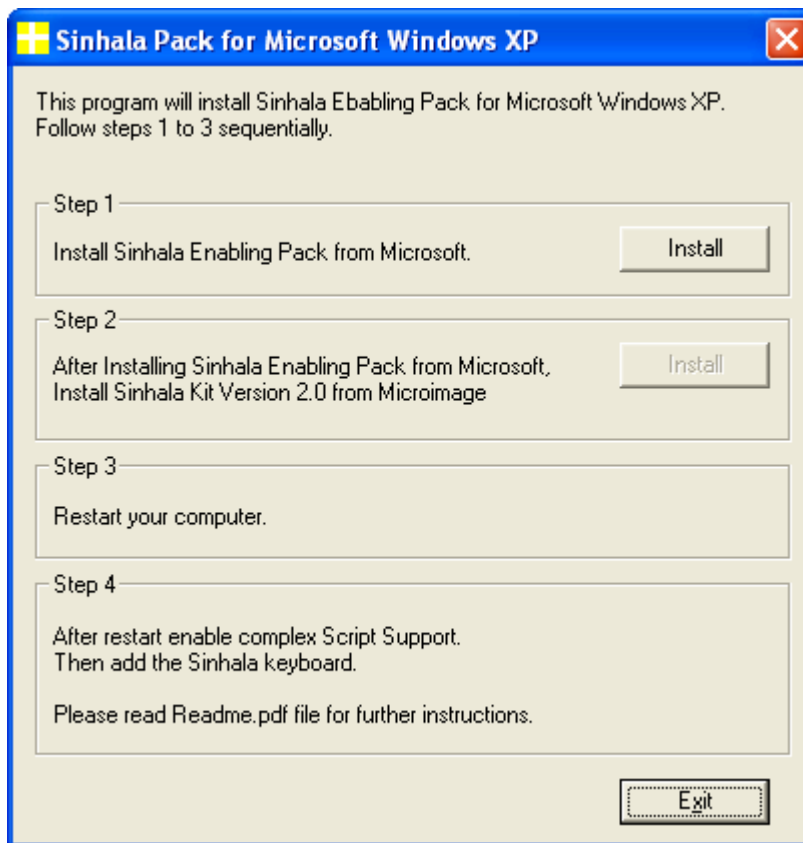


Instructions to Install Sinhala Pack for Microsoft Windows XP

Installation

1. You need Microsoft Windows XP (licensed copy) for installing Sinhala Pack.
2. Install Microsoft Windows XP service pack 2 if it is not already installed.
3. If you have installed Sinhala Pack before, please uninstall it before installing again.
4. Log-in with Administrator privileges.
5. To install Run “**Setup.exe**” program



6. First install “Windows XP Sinhalese Enabling Pack” (**Step 1**)

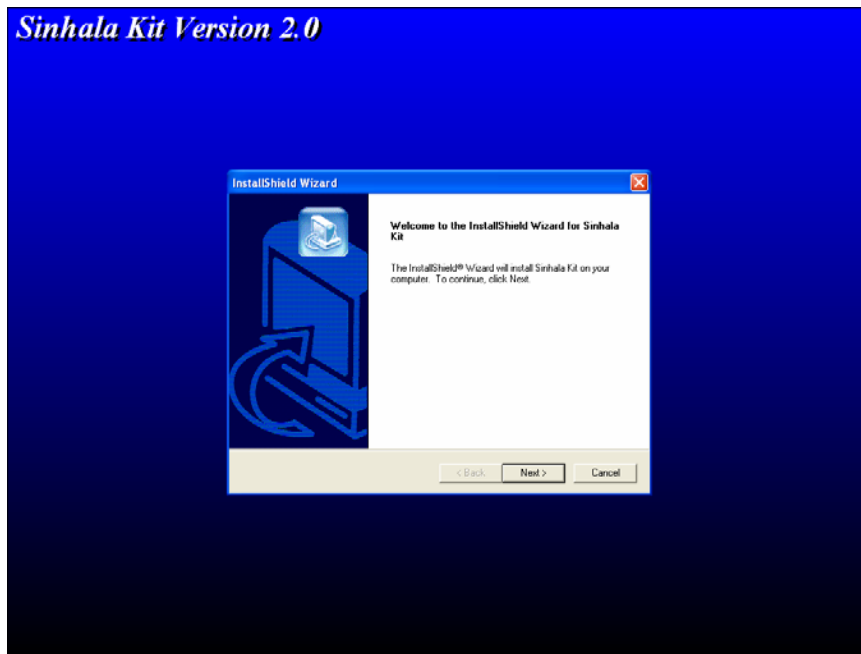


7. At the end of the installation, go to **Step 2**.



8. Install Sinhala Kit Version 2.0 from Microimage (**Step 2**).

If you have already installed “Sinhala Kit Version 2.0” from Microimage you may go to un-installation option of the “Sinhala Kit Version 2.0”. If so, after the un-installation, you need to run the Setup.exe again. You can cancel “Windows XP Sinhalese Enabling Pack” installation (**Step 1**), since it is already installed. Then go to Step 2.



9. After installation please **Restart** (**Step 3**)

Enabling complex Script Support

After the installation

1. Go to “Regional and Language Options”
2. Start -> Control Panel -> Date, Time, Language, and Regional Options -> Regional and Language Options

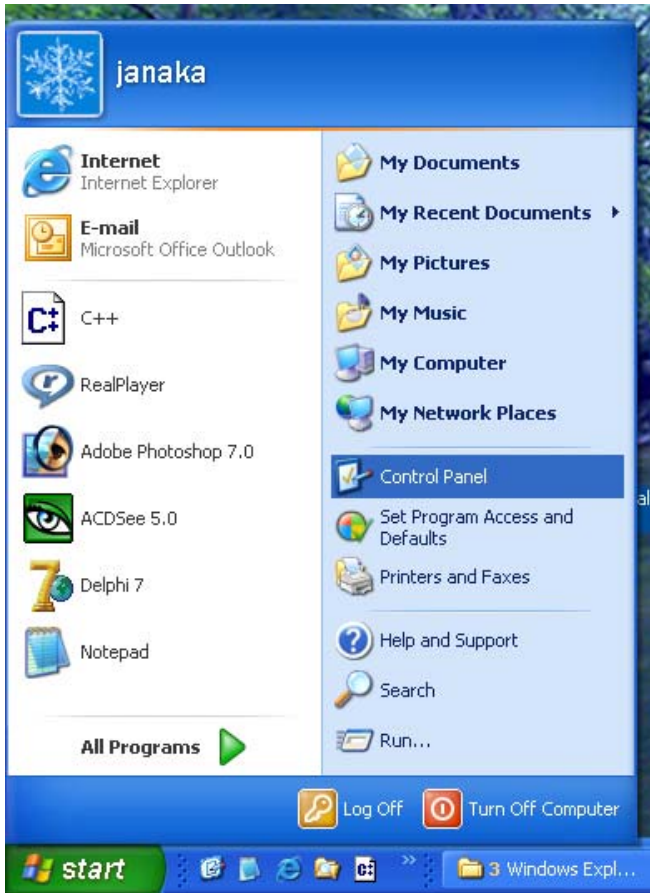


Figure 1

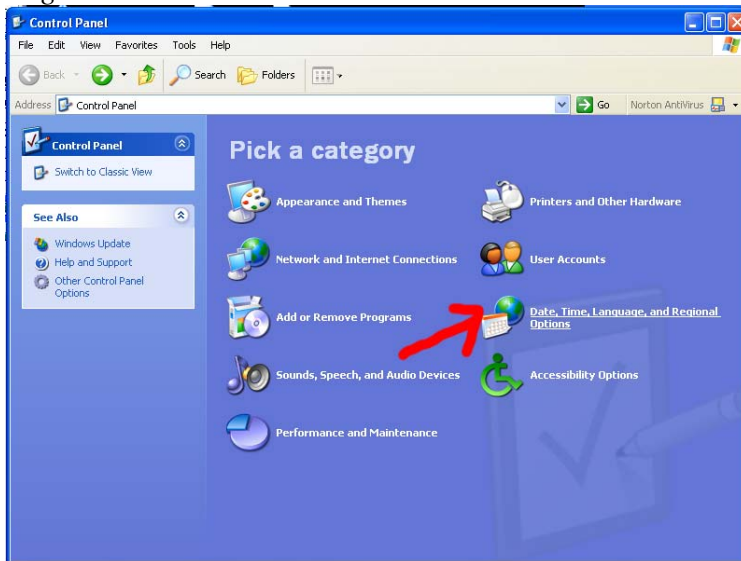


Figure 2

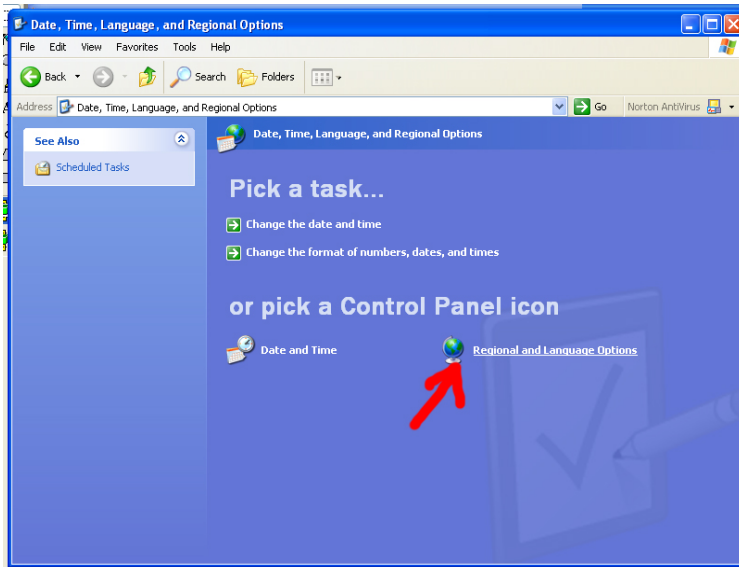


Figure 3

3. In "Regional and Language Options" window go to the "Languages" tab as shown [Figure 4]

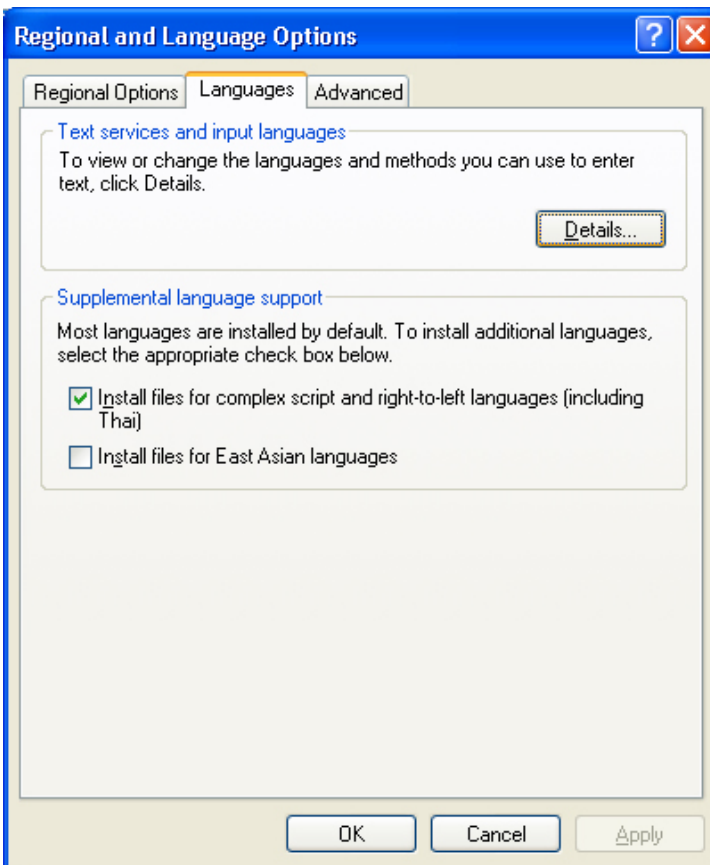


Figure 4

4. In language tab Supplemental language support section, “**Install files for complex script and right-to-left languages (including Thai)**” option should be **checked** as shown in [Figure 5]

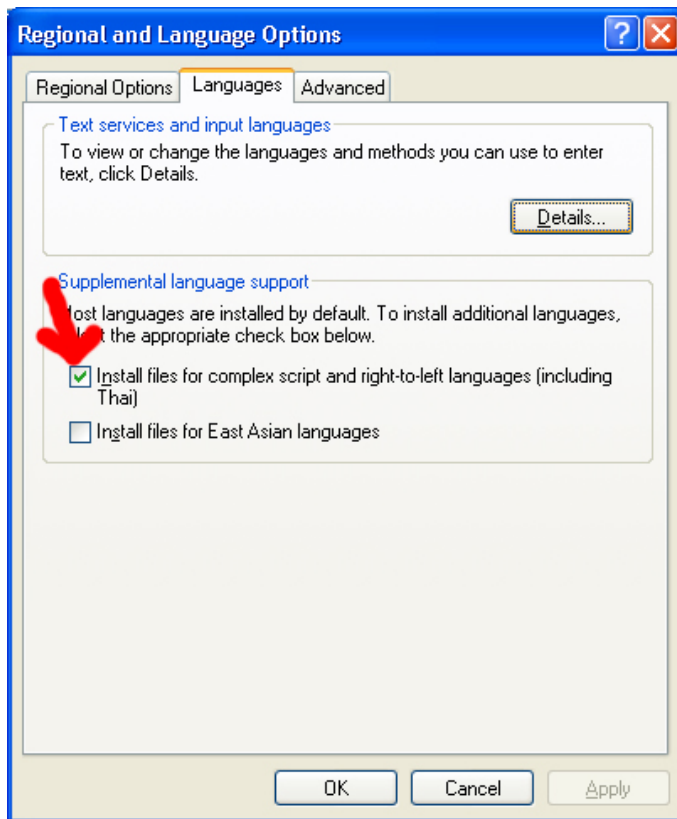


Figure 5

5. If the option is checked as shown in the above image proceed to the next section “**Adding the Sinhala keyboard**”.
6. If it is not checked please **do it now**.
 - When you enable these option Windows need some files from its installation.
 - If you installed Windows XP from a CD it will ask for the **installation CD**.
 - Please provide it.
 - You have to restart the computer after that installation.
 - After **restart** go to next section “**Adding the Sinhala keyboard**”.

Adding the Sinhala keyboard

1. Go to “Regional and Language Options”
2. Click “**Details...**” Button *[Figure 6]*

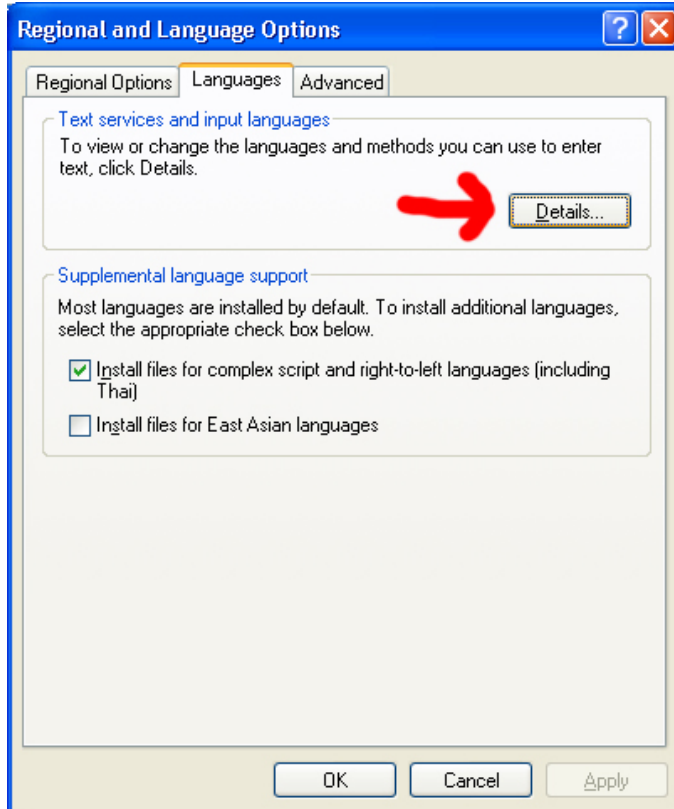


Figure 6

3. It will start “Text Services and Input Languages” window shown [Figure 7]

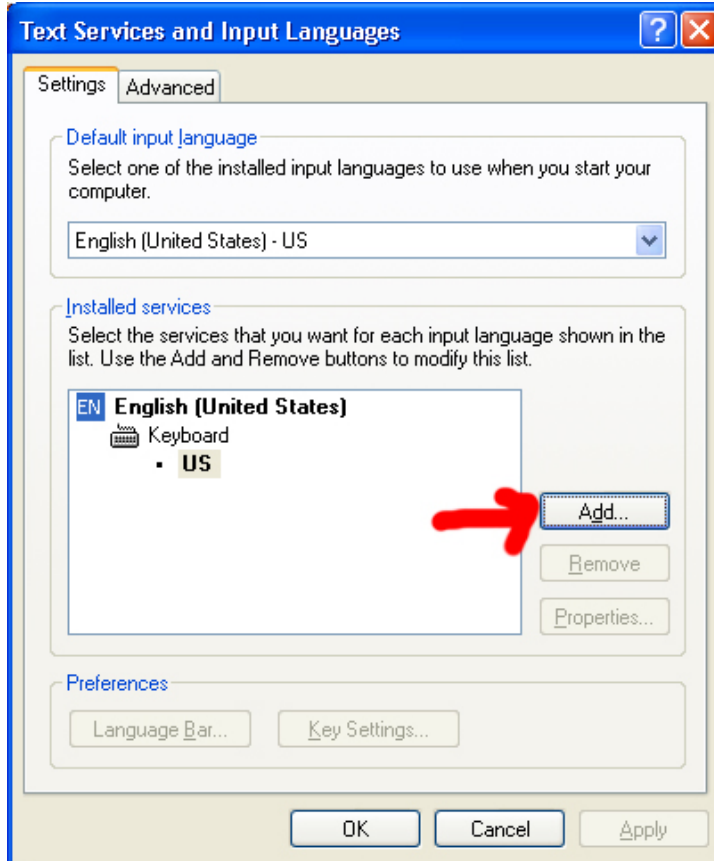


Figure 7

4. Click the “Add...” button in that window as shown [Figure 7].
5. It will start “Add Input language” window as show [Figure 8].

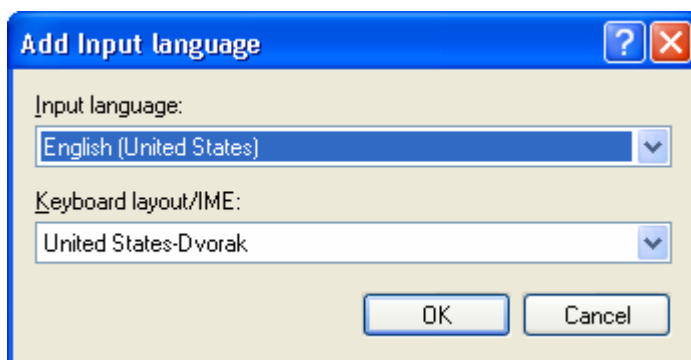


Figure 8

6. Select “**Sinhala (Sri Lanka)**” from Input language selection box as shown [Figure 9].

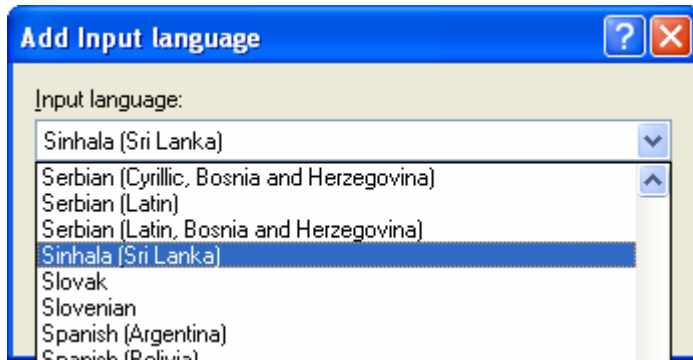


Figure 9

7. Select “**Sinhala**” from “Keyboard layout/IME” selection box as shown [Figure 10].



Figure 10

8. After selecting Sinhala (Sri Lanka) and Sinhala click “**OK**” button as shown [Figure 11]

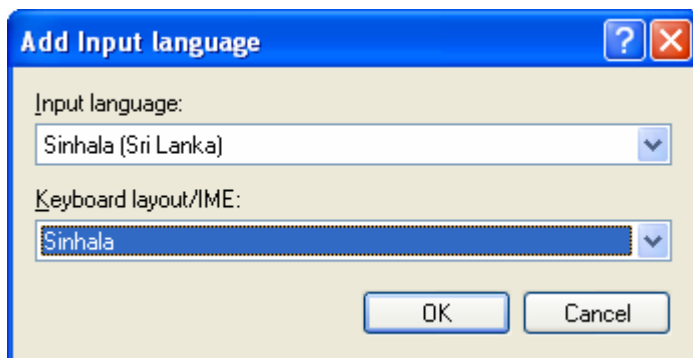


Figure 11

9. Now you should have something similar to figure below [Figure 12] “**Text Services and Input Languages**” window.

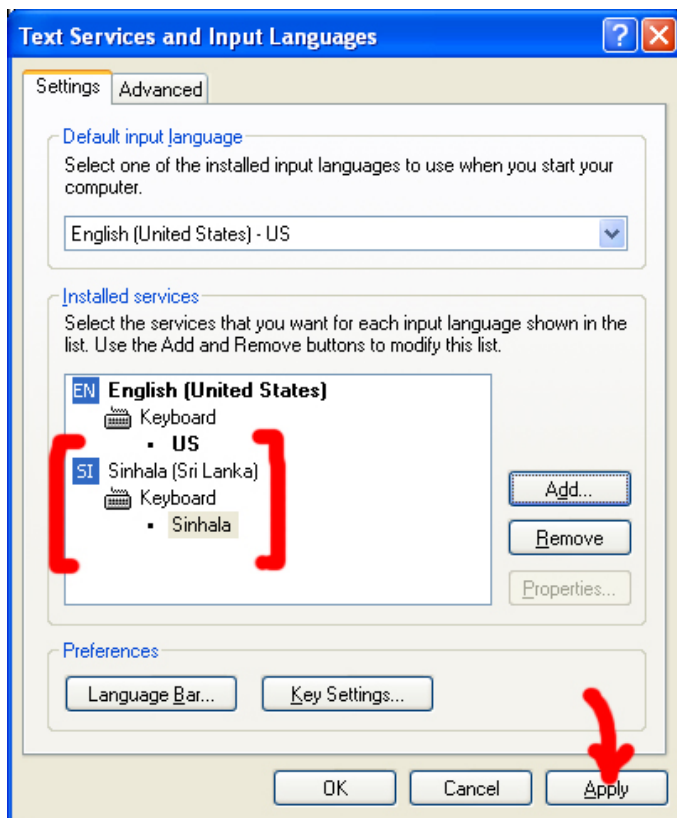


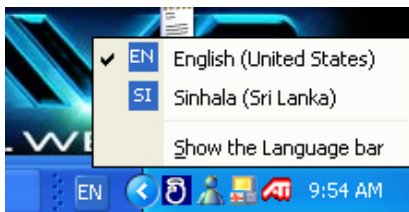
Figure 12

10. Click “**Apply**” button.

11. A small **icon** should appear next to icon tray in your “**Task bar**” as shown below



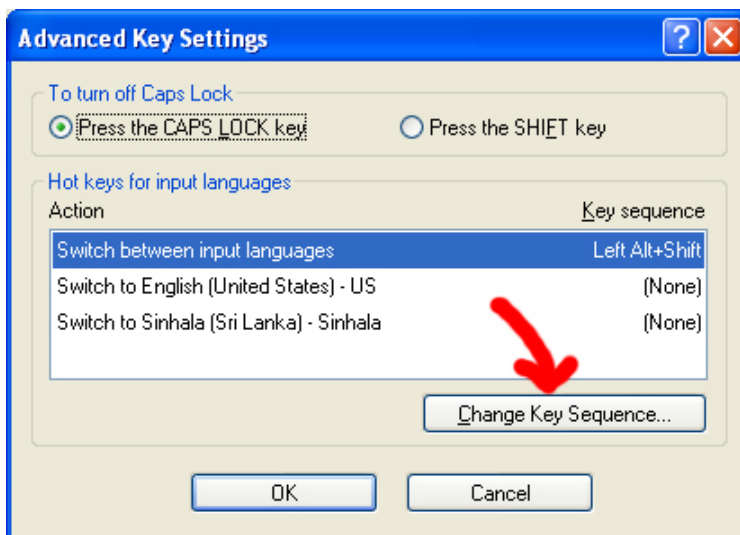
1. **Click** on this icon to change the language. By selecting **Sinhala (Sri Lanka)** you should be able to type in Sinhala.

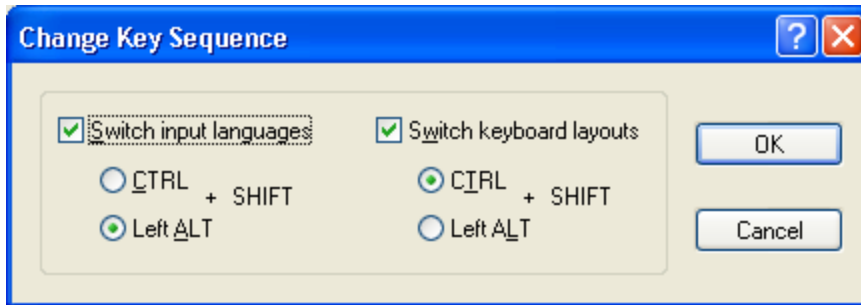


Left Alt + Shift, is the default keyboard shortcut to change the language.

To change these behaviors go to “**Text Services and Input Languages**” window and press **Key Settings...** button.

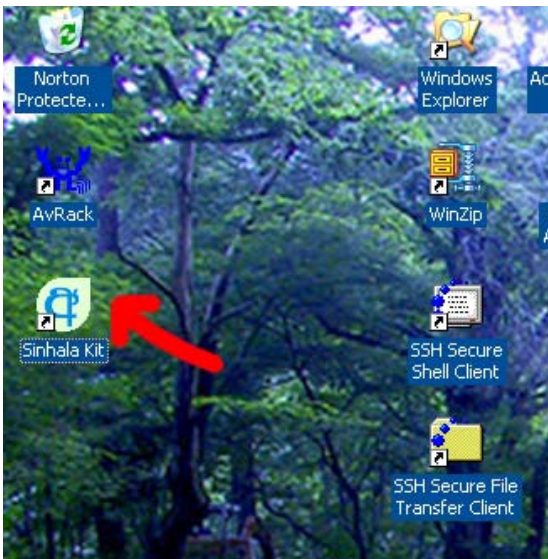
Change the options available in that window according to your need.



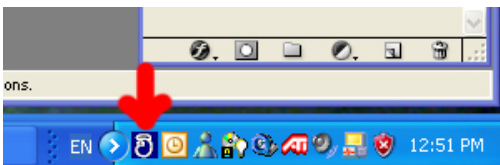


Working with Sinhala

1. To type a document in Sinhala, first start “**Sinhala Kit**”, if it is **not already started**.
2. You should have an Icon called “Sinhala Kit” on your desktop.

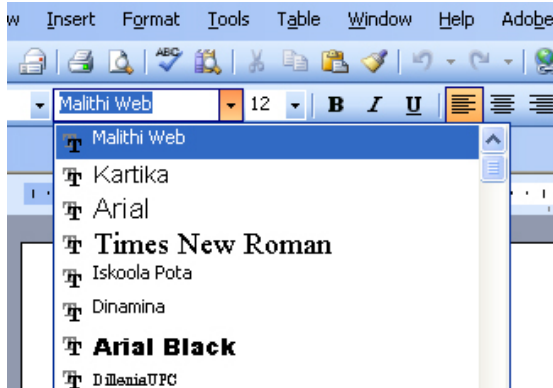


3. If “Sinhala Kit” is **started** a small icon appears in the **System Tray**.

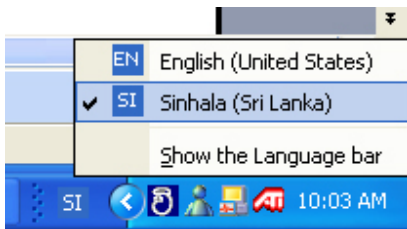
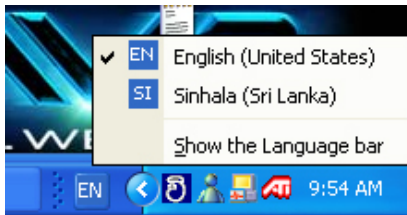


4. Start any **Microsoft office** application, say Microsoft Office.

5. Switch the font to “Iskoola Pota”, or “Malithi Web”
If the font does not appear there, manually type the name of the font to gain access to it.



6. Switch current language to **Sinhala** (Sri Lanka)



7. Now you should be to type in **Sinhala**